



Digital Satellite Receiver
USER'S MANUAL



Table of contents

Safety.....	4
General Introduction.....	6
Front Panel / Rear Panel.....	8
Remote Control Unit.....	10
Main Menu.....	12
1. Satellite.....	12
1.1 ADD Satellite.....	12
1.2 Edit Satellite.....	13
1.3 Delete Satellite.....	13
1.4 Blind Scan.....	13
1.5 Auto Scan.....	14
2.Prog List.....	14
2.1 TV List.....	14
2.2 Radio List.....	15
2.3 TV Favorite List.....	15
2.4 Radio Favorite List.....	15
3. Prog Edit.....	15
3.1 Choose Fav Prog.....	16
3.2 Move Program.....	16
3.3 Delete Program.....	16
3.4 Program Edit.....	16
3.5 Loop Program.....	16

Table of contents

4. TP.....	16
4.1 Add Transponder.....	16
4.2 Edit Transponder.....	17
4.3 Delete Transponder.....	17
4.4 Manu Scan.....	17
5. System.....	17
5.1 TV Standard.....	17
5.2 Language.....	17
5.3 Factory default.....	17
5.4 System Update.....	17
5.5 OSD Setting.....	18
5.6 Picture Setting.....	18
5.7 Version.....	18
5.8 Parental Lock.....	18
6. Tools.....	18
6.1 Calendar.....	18
6.2 Russian.....	18
6.3 Snake.....	18
Software Update.....	20
Trouble Shooting.....	21
Glossary.....	22

Safety Instructions

This STB has been manufactured to satisfy the international safety standards. Please read the following safety precautions carefully.

MAIN SUPPLY

:AC 100/240V, 50/60Hz, 30W.

OVERLOADING

:Do not overload a wall outlet, extension cord or adapter as this may result in fire or electric shock.

Ensure that the power source (socket) is easily accessible.

LIQUIDS

:This STB shall not be exposed to dripping or splashing and that no objects filled with liquids, such as vases, shall be placed on the STB.

CLEANING

:Disconnect the STB from the main supply before cleaning. Do not use any kind of solvents to clean the STB, only use a soft-dry cloth.

VENTILATION

:The slots on top of the STB must be left uncovered to allow proper airflow to the unit.

Ensure a minimum distance of 5cm around the apparatus for sufficient ventilation.

Ensure that the ventilation is not impeded by covering the ventilation openings with items such as newspapers, table-cloths, curtains, etc.

Do not stand the STB on soft furnishings or carpets.

Do not expose the STB to direct sunlight or do not place it near a heater.

Do not stack electronic equipments on top of the STB.

Do not place naked flame sources, such as lighted candles on the apparatus.

ATTACHMENTS

:Do not use any non recommended attachments as these may cause hazard or damage to the STB.

Safety Instructions

CONNECTION TO THE SATELLITE DISH LNB

:Disconnect the STB from the main supply before connecting or disconnecting the cable from the satellite dish.

FAILURE TO DO SO CAN DAMAGE THE LNB.

CONNECTION TO THE TV

:Disconnect the STB from the main supply before connecting or disconnecting the cable from TV.

FAILURE TO DO SO CAN DAMAGE THE TV.

EARTHING

:The LNB cable MUST BE EARTHED to the system earth for the satellite dish.

LOCATION

:Place the STB indoor in order not to expose to lightening , rain or Sunlight.
Use the apparatus only in moderate climates (not in tropical climates).

Battery handling

:Batteries may contain toxic agents that are hazardous to the environment. Therefore, dispose of the batteries immediately according to the prevailing statutory regulations. Never throw the batteries in normal household waste.

General Introduction

INTRODUCTION

This manual will help you learn basic functions such as installation, selecting channels and many other functions of the STB. All functions can be operated by the remote control. You can easily install it by selecting "**Installation**" function and upgrade its software through communication cable.

The remote control is designed for easy access to all the functions at once and for comfortable grab for your hand. It is programmed to control all functions and to easily watch TV and Radio programs via the STB.

WARNING

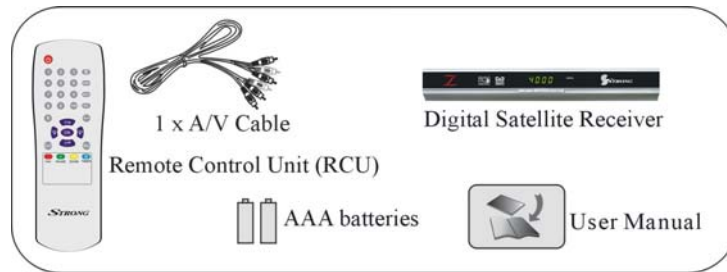
Any problems can be caused by the use of unofficial software. The use of software versions other than dealers or distributors official software will void the manufacturer's warranty. It is advised that only the formal software released from dealers or distributors should be used.

General Introduction

UNPACKING

Unpack the unit and check to make sure that all of the following items are included in the packaging.

- 1 x Remote Control Unit (RCU)
- 1 x User Manual
- 2 x AAA batteries
- 1 x Digital Satellite Receiver
- 1 x A/V Cable



We hope you enjoy using your digital satellite receiver!

Front Panel/ Rear Panel

Front Panel



⏻: Press to switch between Operation and Standby modes.

CH: Changes channels or items from top to bottom on the menus.

Dimension: 250 x 175x 38(W x D x H)

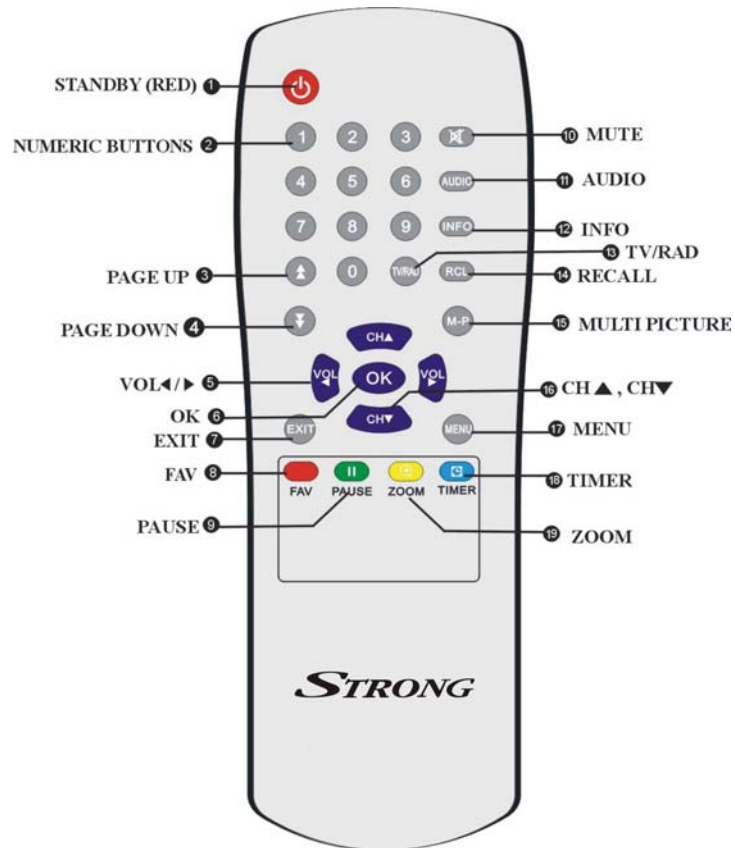
Front Panel/ Rear Panel

Rear Panel



No.	Symbol	Function
1	LNB INPUT	Use to connect an antenna.
2	RS-232C	Use it when connecting to your PC.
3	AV RCA	To connect the Audio/Video RCA output to TV.
4	RF OUT	Connect to TV through Modulator.
5	POWER	Power ON/OFF switch.

Remote Control Unit



Remote Control Unit

1	STANDBY	Switches between Operation and Standby modes.
2	0-9	Changes channels or selects the menu options.
3	PAGE UP	Press to jump one page up.
4	PAGE DOWN	Press to jump one page down.
5	VOL(◀/▶)	Turns up/down volume. Changes the page of channel list.
6	OK	Displays the channel list and selects the item on the menu.
7	EXIT	To close the current menu and return to normal viewing
8	FAV	Selects favorite channel list or current channel list in the view mode. In Edit Channel mode's "Add favorite" menu it changes the right window's channel list.
9	PAUSE	To freeze the screen
10	MUTE	Sounds On/ Off
11	AUDIO	To choose speakers(left, right or stereo),audio format and audio language
12	INFO	To show information about the current program
13	TV/RADIO	Switches between TV and Radio modes.
14	RCL	To return to the previous channel or station
15	M-P	Display 9 channels preview window.
16	CH (▲/▼)	Changes channels or items from top to bottom on the menu.
17	MENU	To display the main menu, or return to a previous menu
18	TIMER	To display the wakeup timer
19	ZOOM	Press to Zoom-in and Zoom-out picture.

Operation

Plug in the STB. Then press the “**power**” button on the remote control or the “**Standby**” button on the STB Front Panel. The Main Menu screen, the beginning of the OSD screen, will appear as shown in the following picture. The Main Menu displays various functions of the STB or you can select with “**CH**” buttons and the numeric buttons on the remote control. To proceed to the next stage, press the “**OK**” button on the remote control.

1. Satellite

Your STB can be easily installed by using “Satellite” Menu.

Plug in the STB, and power on, to get started, please go to satellite menu by pressing “**Menu**” button on the remote control (default lock code: 00000). The installation menu allows you to set the Antenna and various functions, and customize service. Use the direction buttons on the remote control to select an option and press the “**OK**” button to proceed to enter. To move backwards to the previous stage, press the “**Exit**” or “**Menu**” button.



1.1 Add satellite

Add your preferred satellites and edit them. And you can rename the satellite as you like to press OK. You can see the following picture.



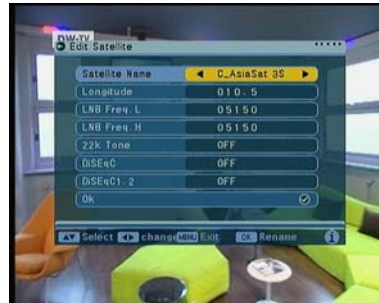
Operation

1.2 Edit Satellite

Press OK on the remote control to enter this menu.

You can press ◀/▶ to change the icon and press ▲/▼ to select.

Press **MENU** to exit the current menu and press **OK** to rename the satellite. Choose the edited satellite as you want and setting, then go to "OK" to save the setting.



1.3 Delete Satellite

Move the cursor to the "Delete satellite" menu and press "OK" on the remote control to enter in.

Press ▲/▼ to select the satellite you want to delete.

Press ◀/▶ to page up and down

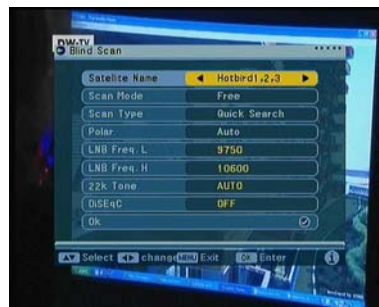
Press **OK** to delete the highlighted satellite

Press "Menu" to exit and it will disappear." Do you want to save?" Press OK to save or cancel to exit.



1.4 Blind Scan

Move the cursor to the "Blind Scan" menu and press "OK" on the remote control to enter in. then you will see the picture as below:



Operation

Press ◀/▶ to page up and down

Press **OK** to delete the highlighted satellite

Press "**Menu**" to exit and it will disappear:" Do you want to save?" Press OK to save or cancel to exit.

If the satellite you want to scan is not saved in software. It is necessary to add a new satellite in Satellite manager menu, before blind scan.

1.5 Auto Scan

Press ▼ move the cursor to "Auto Scan" and press **OK** on the remote control to enter into the sub-menu.

Choose the satellite you want to scan, and press ok to start.

If there are no new channels found, it will not store on the STB. It states:" Can't find new program!"



2. Prog List

Under the Program list menu, you can choose the TV and Radio channels as you wish.



2.1 TV List

Press ▲/▼ to select the channels Press ◀/▶ to page up and down

Press **OK** to enter into the full screen to play

Press "**Menu**" to show the existing satellites under channels.

Operation

2.2 Radio List

Press OK button on the remote control, the radio list will be displayed, there are total 10 programs as well as brief information of channel in one page, and press "CH" buttons and "Vol" buttons to move in the list, and press "OK" button to select current program, press "OK" button again, to exit Radio List Menu to enjoy.

2.3 Tv Favorite List

The easy to use functions of Set Favorite enhance the flexibility of operating huge amount of TV and Radio Channels in your STB. Personalize it with your own way of interests can increase the joy of Digital Entertainment.

There are total 7 groups of Favorite Sorting.



2.4 Radio Favorite List

The same procedure of the Tv Favorite List, and there are 7 groups of favorites sorting as well.

3.Prog Edit

To edit the programs, favorite, move, delete, edit, and lock. .



Operation

3.1 Choose Fav Prog

Under this menu, you can choose the favorite channels on the channel list.

Press ▲/▼ to select the channels

Press ◀/▶ to choose the fav group

Press **OK** to confirm

3.2 Move Program

Press **OK** button to select the channel you wish to move, then press **EXIT** button to exit, and you will see :” Do you want to save?” to save or cancel. Press **OK** to save your changes, press cancel the selected channels will not be moved.

3.3 Delete Program

Press **OK** button to select the channel you wish to delete, then press **EXIT** button to save or cancel the action.

You can press 0 on the remote control to select all channels delete from STB.



3.4 Program Edit

Rename the channel and change the Video PID, Audio PID, PCR PID under this menu.

3.5 Lock Program

Press **OK** button to select the channel you wish to Lock, then **OK** button, you can lock the selected channel from authorized watching.

4. TP

4.1 Add Transponder

Press **OK** button to enter to the submenu.

Input the frequency value and symbol rate value by numeric key, choose the

Operation

correct Polarization, Horizontal or Vertical, then save it.

4.2 Edit Transponder

Input the frequency value and symbol rate value by numeric key, choose the correct Polarization, Horizontal or Vertical, and then save it.

4.3 Delete Transponder

Delete the transponder from the list, and press 0 to select all on the list. Press EXIT button to save it.

4.4 Manu Scan

Pressing 0 on remote control you can scan the current TP. The scan mode is the same as satellite, Free; ALL; Free+NIT; ALL+NIT.



5. System

With system menu, you can set whatever you want the features and specifications of your STB to be most suitable for your watching programs.

5.1 TV Standard

To set TV standard by choosing AUTO; PAL and NTSC; strongly suggested to set always AUTO.

5.2 Language

To select the preferred language by using ▲/▼ buttons.

5.3 Factory default

To default the factory settings,

5.4 System Update

To updated the software by modes of ALL, Code, Code & List, and LOGO.

Operation

Choose the one you want and press START to update.

5.5 OSD Setting

Select the preferred OSD style and OSD transparency.

5.6 Picture Setting

Setting the picture light, red and blue color as you wish.

5.7 Version

You can check the current firmware and software version

5.8 Parental Lock

To prevent the unauthorized Accessing of your STB, you can set the Parental control password to you receiver. (Default password: 00000)



6. Tools

6.1 Calendar

You can get the date information from the calendar, and press “CH” buttons to change the month, press “VOL” buttons to change the year.



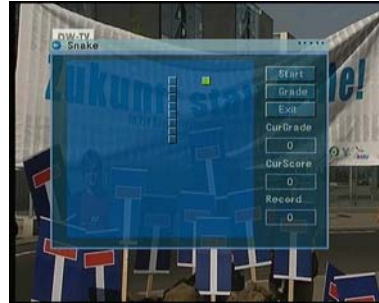
Operation

6.2 Russian

The classic game of all time, Russian is a highly playable game.

6.3 Snake

The classic game of modern times, do not get your snake too long.



Software Update

1. Requested Devices:

(1) Computer: Offer new software for the digital satellite receiver.

(2) Digital Satellite Receiver: The receiver which is going to be upgraded. (short as “receiver”).

(3) Upgrading cable for PC to Unit: A special RS-232 cable supplied by the manufacturer.

2. Operation:

(1) Connect the RS-232 ports of the receiver and the PC with the upgrading cable.

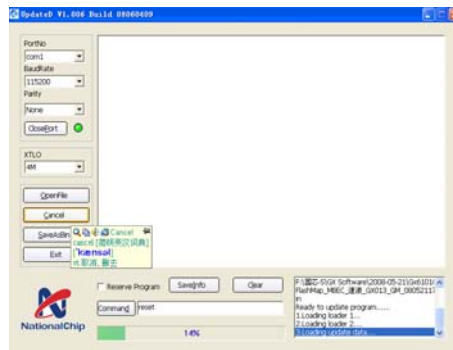
(2) Copy the upgrading software into your computer. Open the “Update.exe” file, then the window appears as follows:

NOTE: Please keep the update.exe file and Lib file on the same position.

(3) Select the Preferences Requirement which you need, click “open file” button choose update file what you need ,then click “update” button .

(4) Turn on the STB, the Update is in progress, some data will be showed in the small window. When the small window showed “update finished”, the receiver will boot automatically.

NOTE: Please do not turn power off until the receiver has restarted completely.



Troubleshooting

Should you encounter some problems with this STB, please check the table Below

Fault Phenomenon	probably reasons	Resolve
Power on, but no display on screen	Please carefully check the power plug, to see if it is plugged in to the power outlet. Has power been interrupted?	Ensure the power plug is inserted into the power outlet correctly.
Power on this STB, then that screen displays "No signal"	Is the aerial installed correctly?	Reinstall the aerial and calibrate it
	LNB input is not connect	Connect the LNB
	The transmission has been interrupted.	Attempt again until the signal returns
	The sky wave disturbs the device	Attempt again later
	The program setup is incorrect	Set the proper parameters of received program in the system settings menu
STB plays a strange sound	Due to the channel containing more audio tracks or audio languages	User can use the "Audio" button on the RCU to select the correct audio track or audio languages

Tips: If you referred to this troubleshooting guide, but it did not resolve the problem you encountered. Please contact the local dealer or technical support, do not open the machine, because that is very dangerous to you or to the machine.

Glossary

(1) 22KHz switch

A tone that can be sent via the LNB coax, this tone can control the LNB or switches on the coax cable. Do not interfere with the DC or 22KHz tone that the receiver sends to the dish.

(2) Antenna

A device that collects and radiates electromagnetic waves includes a satellite dish and a broadband antenna.

(3) CVBS

Composite Video Baseband Signal, Standard single-wire video, mixing lum and chroma signals together.

(4) DiSEqC

Digital Satellite Equipment Control, a protocol established by EUTELSAT organization www.eutelsat.com, the most popular standard are DiSEqC 1.0 for Switching solution, DiSEqC 1.2 for Dish actuator solution, and DiSEqC 2.0 for Satellite Receiver solution.

(5) Forward Error Correction (FEC)

A system of error control for data transmission

(6) Frequency

The number of cycles or events per one second, which is expressed in the unit of Hertz(Hz)

(7) Intermediate Frequency (IF)

A frequency to which a carrier frequency is shifted as an intermediate step in transmission or reception

(8) Low Noise Block (LNB) Downconverter

A low noise microwave amplifier and converter which downconverts a range of frequencies to IF range

(9) NTSC

National Television Standards Committee, a video standard established by the United States (RCA/NBC) and adopted by numerous other countries.

(10) PAL

Phase Alternate Line, a video standard used in Europe and other parts of the

world for composite color encoding.

Glossary

(11) Packet Identifier (PID)

A set of numbers that identifies transport stream packets containing data from a single data stream

(12) Polarization

Satellite waves are polarized. They can be linear or circular. Linear polarity is Vertical or Horizontal, circular polarity is Right-hand and Left-hand circular polarity.

(13) Quaternary Phase Shift Keying (QPSK)

Phase-shift keying in which four different phase angles are used.

(14) RF

A frequency that is useful for radio transmission, usually between 10KHz and 300,000Mhz.

(15) RGB

Video information in the form of Red, Green and Blue tristimulus values, The combination of three values that representing the intensity of each of the three colors can represent the entire range of visible light.

(16) STB

Set Top Box, another common name of Digital Satellite Receiver, because it usually be put on top of TV in household. This word is used now worldwide.

(17) Symbol Rate

The amount of data transmitted every second.

(18) Transponder (TP)

Equipment in a satellite which receives a single uplink channel from a satellite earth station, amplifies it, converts the frequency and changes the polarization, then broadcasts it back to earth.

(19) Transport Stream

The bit stream formed prior to transmission of signals by combining the video, audio and data streams of one service. It consists of fixed length packets of 188 bytes of data.

Specification	
1. Tuner & Demodulator	
Input Frequency Range	950MHz ~ 2150 MHz
RF Input Signal Level	-65 ~ -25dBm
RF Impedance	75W
RF Impedance	55MHz/8MHz(Under 5 Msps)
LNB Power	13/18DC, +/-5%, 0.5Amax, 1.8Apeak overloaded protect
LNB Tone Switch	22KHz +/- 2KHz, 0.65Vp-p+/-0.15V
DiSEqC Contro	V1.0, V1.2, Tone burst A/B
Demodulation	QPSK
Symbol Rate	1 ~ 45Msps/SCPC, MCPC
2.. MPEG	
Transport Stream	MPEG-2 ISO/IEC 13818 Transport Stream Specification
Input Rate	Max.15Mbit/s
Video	MPEG-2 <u>MP@ML</u>
Audio	MPEG-1/2 Audio Layer1 or layer2
Video Resolution	720 x 576(PAL), 720 x 480(NTSC)
Audio Mode	Stereo, Dual channel, Joint stereo, Mono
Audio Sampling Frequency	32/44.1/48KHz
3. Connector	
LNB IF input	F type, IEC 169-24 Female
RCA	AUDIO L, R
Serial Port	Rs232 D-sub male type(max 57.6 Kbps)
4 Power Supply	
Input Voltage	100-240V~, 50/60Hz.
Power Consumption	Max.30W
Weight	Appr. 1.9KG
Operating Temperature	0°C - 40°C
Storage Temperature	-40°C - 65°C