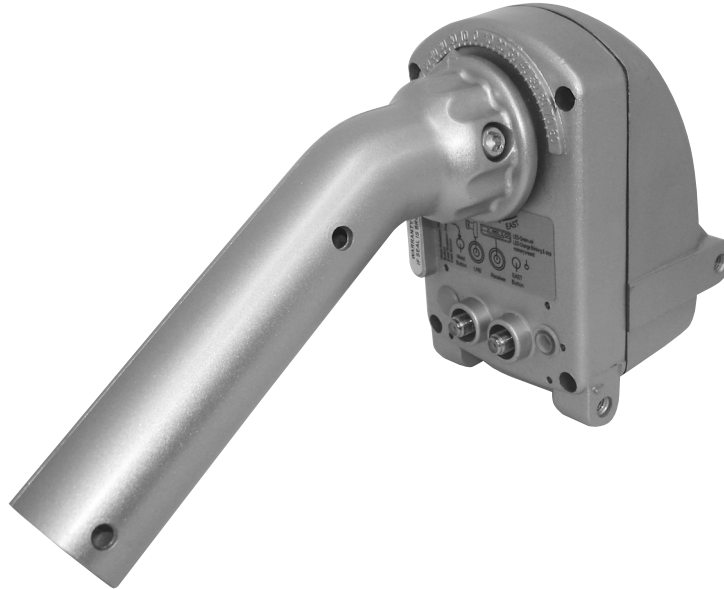


**SRT P100**  
**DiSEqC 1.2**  
**MOTORIZED HORIZON-TO-HORIZON MOUNT**



SPECIFICATIONS		
Commands		DiSEqC 1.2
Antenna Size		120cm Max.
Speed		0.9°/sec at 13V, 2.5°/sec at 18V
Azimuth Angle Travel		160° Max.
Elevation Angle Setting		25° – 75°
Tube for Antenna		Ø 42xL150mm
Mounting Pipe Diameter		35 – 65mm
Input Voltage		DC 13/18V
Output Voltage		DC 13/18V
Power Consumption		50mA (Stand By) / 200mA (Normal) / 350mA (Max.)
Satellite Positions Memory		100
Goto 0 Position Function		Implemented
Recalculation Function		Implemented
Goto X Function		Implemented
Buttons		Two (East/West)
LED Indicator		2 colours
Limit Protection	1. 2.	Programmable by software by Sensor reading
Positioning Sensor		High Resolution Hall Effect Sensor
Carton Weight		3.1Kg
Carton Measurements		355x175x115mm

**STRONG TECHNOLOGIES PTY. LTD. - 60 WEDGEWOOD ROAD, HALLAM, VICTORIA 3803, AUSTRALIA**  
**PH: +61 3 8795-7990 FAX: +61 3 8795-7991**

**TECHNICAL SUPPORT: 1800 820 030**

**STRONG & CO. (FAR EAST), LTD. - P. O. BOX 85, YOKOHAMA, KANAGAWA-KEN, JAPAN 231-91 - FAX: +81 45 651-1842**

[www.strong-technologies.com](http://www.strong-technologies.com)

[salesau@strong-technologies.com](mailto:salesau@strong-technologies.com)